



Honey Marketing Specifics

Regulating the Beekeeping, Honey Production and Trade Sectors in UAE and GCC

Proposed Road Map

By

Rami Ollaik

Faculty of Agricultural and Food Sciences
American University of Beirut
Beirut, Lebanon
ro03@aub.edu.lb



Beekeeping Practices, Honey Production and Trade

🐝 Laws and regulations

🐝 Road Map:

- Theoretical (scientific research) pathways
- Practical (field visits and discussions) pathways

Goals:

- 1- Defining, developing and improving the codes and articles
- 2- Linking those codes and articles to applicable law enforcement settings and measures.





I- Beekeeping Practices



1- Definition of technical items and materials covered

2- Locally existing practices

A. Organizing local beekeeping practices

i. Target audiences



Existing beekeepers:

-Survey/Questionnaire Preparation

-Forming beekeepers' database: officials and field visits: actual data collection

+ practical training for appointed inspectors

3

Potential beekeepers (Non beekeepers):

-Declaration Form Preparation



-Training on Declaration Form Filling out and Processing:

Meeting with officials and/or appointed inspectors:

Modifying constructed database

4



ii. Specifying a mediator between government officials and individual beekeepers:

Beekeepers' association or middlepersons for both federal and local levels (could also be the appointed inspectors)

 **Discussing choices and finalizing:**

Concluded with officials

iii. Discussing the possibility of access to natural reserves (if applicable)

 **Specifying zoning requirements** (if applicable): Meetings with government authorities

 **Proper needs assessment:** Field visits to local beekeepers



5

B. Technical resources in use

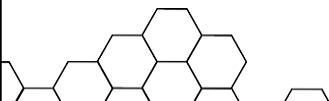
i. Environmentally neutral

(Examples: wooden hives and accessories, metal implements, etc.)

 **No specific regulations needed at this level**

ii. Having environmental and ecological impact

(Medicines, chemicals, pesticides): Regulations needed



6



🐝 **Developing regulations for the profiling of the relevant medicines, chemicals and pesticides** (technical list)

🐝 **Developing regulations for the admissible honeybee species/breeds ecotypes/breeds** for both live bee colonies and queen bees

(technical list;
implementation schedule)

🐝 **Adopting the local norms and international standards**

(Specifying permissible items)



3- Importation practices:

Imported technical resources

i. Having environmental and ecological impact

(medicines, chemicals, pesticides)

🐝 **Developing regulations for the admissible honeybee species/ ecotypes/breeds**

(technical list: specifying imported live bee forms: Package bees, nucleus colonies, queens)

🐝 **Constructing a technical list for applicable bee diseases and parasites**



🐝 Developing regulations that stipulate the inadmissible infected live bees and beekeeping items

(such as beeswax foundation)

🐝 Field visits to local apiaries for the inspection of existing bee diseases and parasites

Referring the imported items to federal/local labs for inspection



II- Honey (and Other Hive Byproducts)

I- Profiling of honey and other hive byproducts

(Genuine vs non-genuine)

A. Applicable definitions for genuine items

B. Locally adopted standards and norms

(Based on international standards and norms such as those of International Honey Commission and Codex Alimentarius)

i. Chemical Composition

ii. Toxicity/Chemical Residues





2- Developing the proper quality inspection measures:

i. Developing regulations for honey profiling

(and other hive byproducts)

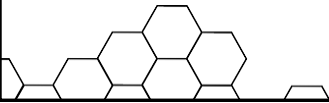
ii. Setting Packaging requirements

iii. Setting Labeling Requirements

(producer/brand name, floral source, weight, production and expiry dates, nutrition facts, etc.)

iv. Assessing Existing Lab Analysis capacities

Field visits to federal/local lab facilities/training of appointed personnel



11

3- Locally produced honey (and other hive byproducts)

i. Ability to inspect the steps followed from extraction to packaging

ii. Advisory role designed to increase the competitiveness of local products

4- Imported honey

Judging by the final product in reference to origin and lab certificates

Applying the sampling and analysis techniques applicable to locally produced honey



12



III- From Inspection to Law Enforcement

I- Locally existing items

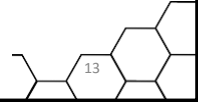
A. Farm sites

B. Market outlets

(for the inspection of both beekeeping technical resources and honey and other hive byproducts)

Honey selling sites

(Honey and other hive byproducts such as supermarkets, honey shops, etc.)



Beekeeping equipment suppliers



i. Detection authorities

Concerned ministry representative/concerned local authorities

ii. Inspection Authorities/federal or local lab facilities

(Following the adopted laws and regulations)

iii. In case of non-compliance: Law enforcement action

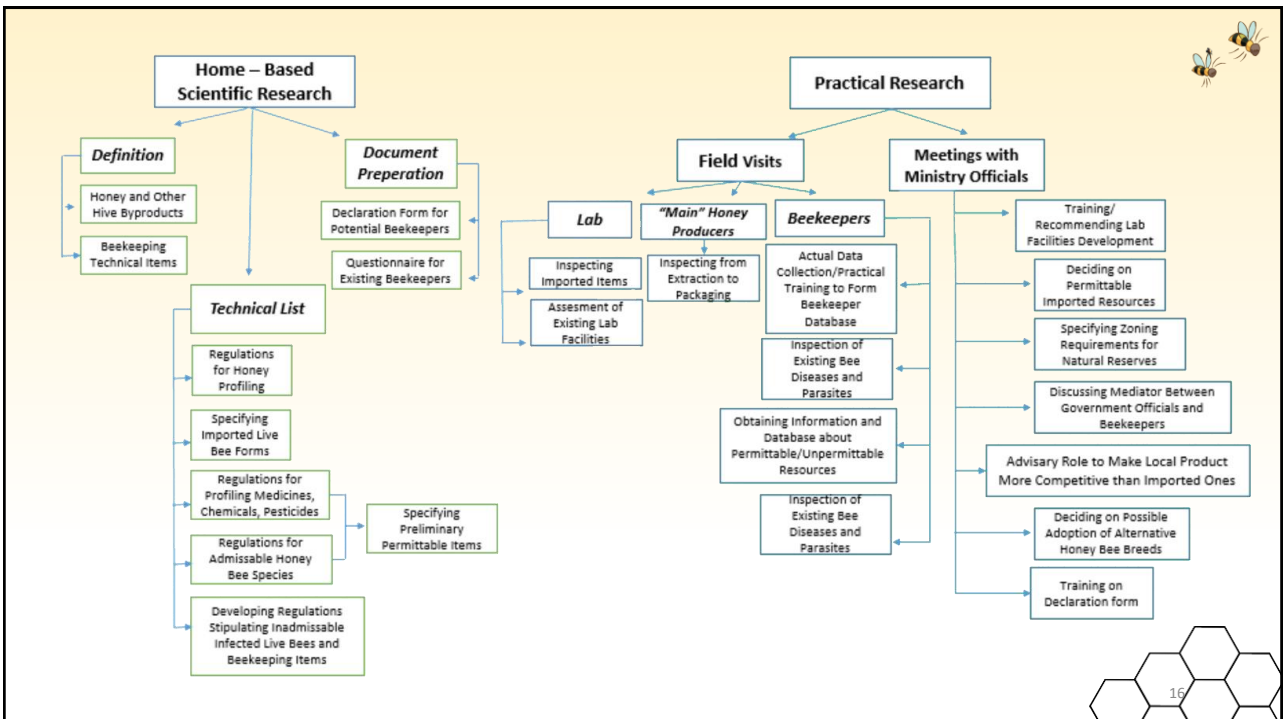
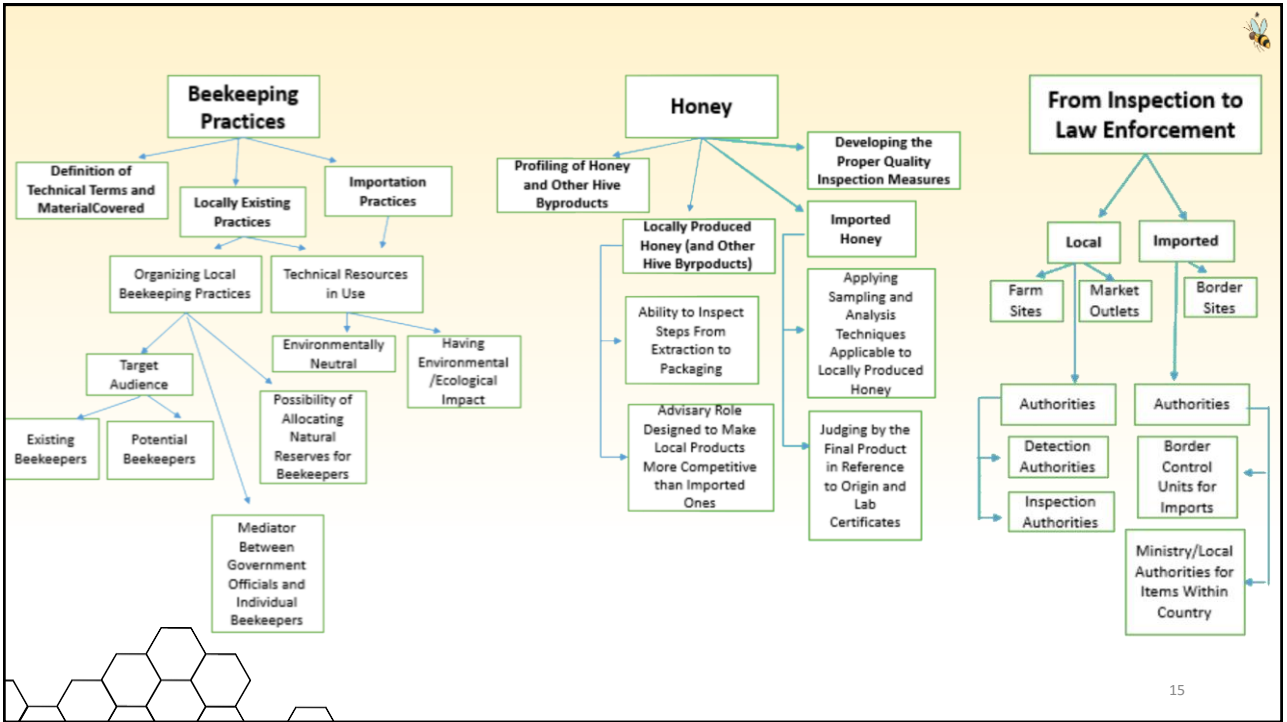
2- Imported items

Border sites (airports, sea ports, terrestrial checkpoints): Detection

i. Border control units

ii. Concerned authorities for items already present within the country





مؤتمر الجمعية العربية لتربية النحل الأول
5 - 6 فبراير 2018م
مركز أبوظبي الوطني للمعارض - دولة الإمارات العربية المتحدة